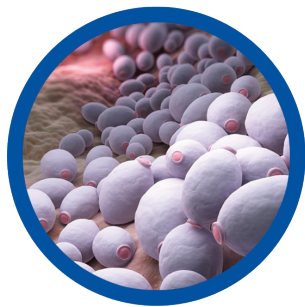


A 3D anatomical illustration of the human digestive system, showing the esophagus, stomach, liver, gallbladder, pancreas, and the small and large intestines. The organs are rendered in a realistic style with shading and texture, set against a white, semi-transparent human torso. The text 'GI HEALTH' is overlaid in large, bold, white letters across the upper part of the image.

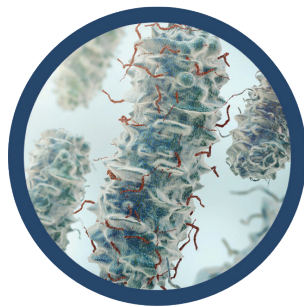
GI HEALTH

BIOTICS RESEARCH®

Addressing the Four Stages of GI Health*



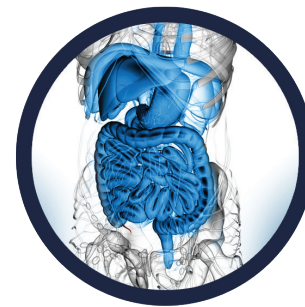
REMOVE



REPLACE



REINOCULATE



REPAIR

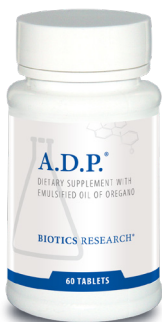
**These may not be in chronological order, depending on the specific GI issue.*

Research shows that gut health is critical to overall health and that an unhealthy gut may contribute to a wide range of conditions impacting immune and nervous systems, and even hormonal imbalance. Supporting gastrointestinal health and restoring the integrity of the gut barrier are essential to optimizing overall health.



REMOVE

Overgrown yeast and bacteria that may (or may not) normally live in the GI tract are removed using specific gluten free nutritional supplements, including a proven-effective patented formula.



A.D.P.®

Product #: 1101 (60T) Product #: 1104 (120T)
Emulsified Oregano - Delayed Release



A.D.P.® supplies a patented formula of sustained release, emulsified oil of oregano. This powerful plant extract boasts robust antioxidant properties along with a strong history in supporting GI health.+ The oil of oregano in A.D.P.® uses micro-emulsion technology for increased nutrient absorption and bioavailability, dramatically increasing the effective surface area of the oil. In addition, a sustained release mechanism has been applied to A.D.P.®, assuring a gradual release throughout the digestive tract where it functions to impact undesirable intestinal organisms.+ This combined effect of emulsification and sustained release optimizes intestinal exposure to the essential oil.

Recommended: One (1) tablet with meals and at bedtime as a dietary supplement or as otherwise directed by a healthcare professional.

Supplement Facts

Serving Size: 1 Tablet

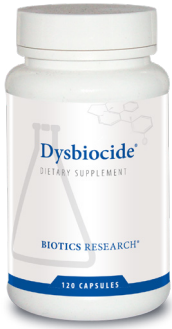
	Amount Per Serving
Oregano Oil (<i>Origanum vulgare</i>) (extract from leaf)	50 mg*

* Daily Value not established

Other ingredients: Cellulose, modified cellulose gum, potassium sorbate, water, silica and gum arabic.

A.D.P.® supplies oregano oil which is emulsified and processed in a gradual release form for optimal effectiveness. This statement has not been evaluated by the Food and Drug Administration. This product is not intended to diagnose, treat, cure, or prevent any disease.

Patent #5,955,086



Dysbiocide®



Product #: 7856 (120C) | Gastrointestinal Support

Dysbiocide® supplies a proprietary blend of herbs and herbal extracts to support normal gut health. The combination of Eastern and Western herbs in this formula provides synergistic, comprehensive support for healthy gut microbiota, even with low dosing.

Recommendation: Two (2) capsules two (2) times each day as a dietary supplement or as otherwise directed by a healthcare professional.

Caution: Not recommended for pregnant or lactating women. May cause mild constipation in sensitive individuals. If constipation persists, discontinue use and contact your healthcare professional. Wormwood (*Artemisia absinthium*) is not recommended concurrently with drugs that thin the blood, drugs that reduce stomach acid, or drugs that prevent or lessen seizures. Consuming Wormwood may intensify the effects and side effects of drinking alcohol.

Supplement Facts

Serving Size: 2 Capsules
Servings Per Container: 60

	Amount Per Serving
Proprietary Blend	950 mg
Dill (<i>Anethum graveolens</i>) (seed) *	
Stemona (<i>Stemona sessilifolia</i>) (root) (extract) *	
Wormwood (<i>Artemisia absinthium</i>) (shoot & leaf) (extract) *	
Java Brucea (<i>Brucea javanica</i>) (fruit) (powder & extract) *	
Chinese Pulsatilla (<i>Pulsatilla chinensis</i>) (rhizome) (powder & extract) *	
Jamaica Quassia (<i>Picrasma excelsa</i>) (bark) (extract) *	
Hedyotis (<i>Hedyotis diffusa</i>) (herb) (extract) *	
Cutch Tree (<i>Acacia catechu</i>) (heartwood & bark) (powder & extract) *	
Yarrow (<i>Achillea millefolium</i>) (leaf & flower) (extract) *	

* Daily Value not established

Other ingredients: Capsule shell (gelatin and water), cellulose and magnesium stearate (vegetable source).



Immuno-gG® SBI



Product #: 5292 (120C) | Immune Support

Immuno-gG® SBI is a dairy-free immunoglobulin concentrate formula that supports healthy digestion and immune function.* This purified source of immunoglobulin G (IgG) is derived from bovine serum making it free of lactose, casein and β -lactoglobulins.

Recommendation: Four (4) capsules each day as a dietary supplement or as otherwise directed by a healthcare professional.

Supplement Facts

Serving Size: 4 Capsules
Servings Per Container: 30

	Amount Per Serving	% Daily Value
Calories	10	
Protein	2 g	4% [†]
Serum-Derived Bovine Immunoglobulin Concentrate (ImmunoLin®)	2.42 g	*
Immunoglobulin G (IgG)	1.15 g	*

[†] Percent Daily Values based on a 2,000 calorie diet.

* Daily Value not established

Other ingredients: Capsule shell (gelatin and water) and sunflower lecithin.

ImmunoLin® is a registered trademark of Entera Health, Inc.



Immuno-gG® SBI Powder



Product #: 5293 (2.6 oz) | Immune Support

Immuno-gG® SBI Powder is a dairy-free immunoglobulin concentrate formula that supports healthy digestion and immune function.* This purified source of immunoglobulin G (IgG) is derived from bovine serum so can be used as an alternative to colostrum, making it free of lactose, casein and β -lactoglobulins. This powdered formula is convenient, palatable, and easy to dose.

Recommendation: One scoop of **Immuno-gG® SBI Powder** each day or as otherwise directed by a healthcare professional.

Supplement Facts

Serving Size: 2.5 g (approx. 1 scoop)
Servings Per Container: 30

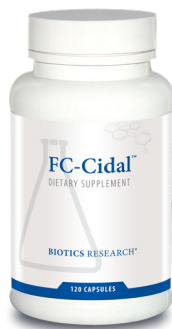
	Amount Per Serving	% Daily Value
Calories	10	
Protein	2 g	4% [†]
Serum-Derived Bovine Immunoglobulin Concentrate (ImmunoLin®)	2.5 g	*
Immunoglobulin G (IgG)	1.2 g	*

[†] Percent Daily Values based on a 2,000 calorie diet.

* Daily Value not established

Other ingredients: Sunflower lecithin.

ImmunoLin® is a registered trademark of Entera Health, Inc.



FC-Cidal™



Product #: 6310 (120C) | Gastrointestinal Support

FC-Cidal™ supplies a proprietary blend of herbs and herbal extracts which function to support healthy GI function.* Culinary herbs have long been used to help control pests and food-borne yeasts and molds in the context of food safety. This formulation is specifically designed to help support a healthy microbial balance due to a wide array of terpenoid and polyphenolic compounds.*

Recommendation: One (1) capsule two (2) times each day as a dietary supplement or as otherwise directed by a healthcare professional.

Caution: Not recommended for pregnant or lactating women.

Supplement Facts

Serving Size: 1 Capsule

	Amount Per Serving
Proprietary Blend	500 mg
French Tarragon (<i>Artemisia dracunculus</i>) (leaf) *	
Indian Tinospora (<i>Tinospora cordifolia</i>) (stem & root) *	
Horsetail (<i>Equisetum arvense</i>) (whole herb) *	
Thyme (<i>Thymus vulgaris</i>) (leaf) *	
Pau D'Arco (<i>Tabebuia impetiginosa</i>) (inner bark) *	
Stinging Nettle Extract (<i>Urtica dioica</i>) (root) *	
Olive (<i>Olea europaea</i>) (leaf) *	

* Daily Value not established

Other ingredients: Capsule shell (gelatin and water), cellulose and magnesium stearate (vegetable source).

REPLACE

Bile salts, digestive enzymes, and hydrochloric acid levels are replaced using specific gluten free nutritional supplements in order to maintain and promote healthy digestion.



Beta-TCP™



Product #: 1215 (90T) #: 1216 (180T) | Digestive/Biliary Support

Beta-TCP™ contains both digestive and antioxidant enzymes (vitamin C), along with taurine and organic beet concentrate. It is designed to help support healthy bile flow and the normal conversion of bile acid to cholesterol.

Recommendation: One (1) tablet with each meal as a dietary supplement or as otherwise directed by a healthcare professional.

Supplement Facts

Serving Size: 1 Tablet

	Amount Per Serving	% Daily Value
Vitamin C (ascorbic acid)	60 mg	67%
Taurine	100 mg	*
Pancrelipase (porcine)	50 mg	*
Organic Beet Concentrate** (Beta vulgaris) (whole)	100 mg	*
Superoxide Dismutase (from vegetable culture [†])	20 mcg	*
Catalase (from vegetable culture [†])	20 mcg	*

* Daily Value not established

Other ingredients: Cellulose, stearic acid (vegetable source), magnesium stearate (vegetable source) and food glaze.

** Whole beet concentrate from certified organically grown beets.

[†] Specially grown, biologically active vegetable culture (from organic peas, lentils and/or chickpeas) containing naturally associated phytochemicals including polyphenolic compounds with SOD and catalase, dehydrated at low temperature to preserve associated enzyme factors.



Beta Plus™



Product #: 1210 (90T) Product #: 1209 (180T) | Digestive/Biliary Support

Beta Plus™ is a source of bile salts, digestive enzymes and organic beet concentrate, along with SOD and catalase. Consider this product whenever the gallbladder has been removed, or in situations when supplemental bile salts may be beneficial.

Recommendation: One (1) tablet with each meal as a dietary supplement or as otherwise directed by a healthcare professional.

Supplement Facts

Serving Size: 1 Tablet

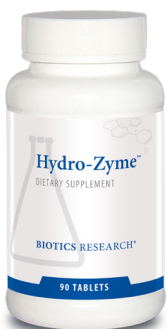
	Amount Per Serving	% Daily Value
Ox Bile Extract	100 mg	*
Pancrelipase (porcine)	50 mg	*
Organic Beet Concentrate** (Beta vulgaris) (whole)	100 mg	*
Superoxide Dismutase (from vegetable culture [†])	20 mcg	*
Catalase (from vegetable culture [†])	20 mcg	*

* Daily Value not established

Other ingredients: Cellulose, stearic acid (vegetable source), magnesium stearate (vegetable source) and food glaze.

[†] Specially grown, biologically active vegetable culture (from organic peas, lentils and/or chickpeas) containing naturally associated phytochemicals including polyphenolic compounds with SOD and catalase, dehydrated at low temperature to preserve associated enzyme factors.

** Whole beet concentrate from certified organically grown beets.



Hydro-Zyme™



Product #: 1262 (90T) #: 1263 (250T) | HCl/Digestive Support

Hydro-Zyme™ provides digestive support via supplemental betaine hydrochloride, pepsin, and pancreatin, along with other known synergists. Gastric juice contains hydrochloric acid and pepsinogens, precursors of the family of proteolytic enzymes called pepsins. Betaine hydrochloride represents a dietary source of hydrochloric acid, a strong mineral acid which functions to maintain healthy gastric pH. Pancreatin is derived from porcine pancreas, highly enriched in pancreatic enzymes, in a ratio akin to human pancreas. **Hydro-Zyme™** may be considered when the need for supplemental hydrochloric acid and/or pancreatin are indicated.

Recommendation: One (1) tablet with each meal as a dietary supplement or as otherwise directed by a healthcare professional.

Supplement Facts

Serving Size: 1 Tablet

	Amount Per Serving	% Daily Value
Vitamin B6 (as pyridoxine hydrochloride)	2 mg	118%
Betaine (as betaine hydrochloride)	150 mg	*
Glutamic Acid (as L-Glutamic acid hydrochloride)	50 mg	*
Ammonium Chloride	35 mg	*
Pancreatin 4X (porcine)	10 mg	*
Pepsin (1:10,000)	10 mg	*

* Daily Value not established

Other ingredients: Vegetable culture[†], cellulose, stearic acid (vegetable source), modified cellulose gum, silica and food glaze.

[†] Specially grown, biologically active vegetable culture (from organic Pisum sativum, Lens esculenta and/or Cicer arietinum) containing naturally associated phytochemicals including polyphenolic compounds with SOD and catalase, dehydrated at low temperature to preserve associated enzyme factors.

*These statements have not been evaluated by the Food and Drug Administration. These products are not intended to diagnose, treat, cure, or prevent any disease.



Intenzyme Forte™



Product #: 1207 (50T) #: 1201 (100T) #: 1202 (500T)
Digestive/Inflammatory Response Support

Intenzyme Forte™ is a broad spectrum proteolytic enzyme formulation, containing pancreatin, bromelain, papain, lipase, amylase, trypsin and alpha chymotrypsin. It may be utilized to support numerous protein metabolism pathways.⁺ Proteolytic enzymes are capable of exerting influence over a wide variety of physiological and biochemical processes. The benefits of **Intenzyme Forte™** include its effect on muscle soreness and discomfort due to overexertion, the support of hormone processing, as well as providing support for healthy digestive, immune and circulatory functions.⁺

Recommendation: One (1) tablet three (3) times each day as a dietary supplement or as otherwise directed by a healthcare professional.

Supplement Facts

Serving Size: 1 Tablet

	Amount Per Serving	% Daily Value
Pancreatin 4X (porcine)	100 mg	*
Bromelain (from pineapple)	50 mg	*
Papain (from papaya)	50 mg	*
Lipase (porcine)	10 mg	*
Amylase (porcine)	10 mg	*
Trypsin & Alpha Chymotrypsin (porcine)	100 mg	*
Superoxide Dismutase (from vegetable culture [†])	10 mcg	*
Catalase (from vegetable culture [†])	10 mcg	*

* Daily Value not established

Other ingredients: Stearic acid (vegetable source), cellulose, magnesium stearate (vegetable source) and food glaze.

[†] Specially grown, biologically active vegetable culture (from organic peas, lentils, and/or chickpeas) containing naturally associated phytochemicals including polyphenolic compounds with SOD and catalase, dehydrated at low temperature to preserve associated enzyme factors.

REINOCULATE

The restoration of optimal gut flora is addressed with the support of a specific gluten free probiotic.



BioDoph-3 GI™



Product #: 1203 (30C) | Gastrointestinal Support

BioDoph-3 GI™ is a synergistic probiotics formula containing three clinically validated probiotic strains shown to be effective in randomized and controlled trials. Mediated by targeted mechanisms such as production of short chain fatty acids, acetylcholine and polyphosphate granules, **BioDoph-3 GI™** promotes intestinal barrier integrity, balances gut microflora, helps break down lactose and supports a healthy mood.

Recommendation: One (1) capsule each day as a dietary supplement or as otherwise directed by a healthcare professional.

Supplement Facts

Serving Size: 1 Capsule

Servings Per Container: 30

	Amount Per Serving	% Daily Value
Floradapt™ Intensive G.I. proprietary probiotic blend (providing 3 Billion CFUs)	150 mg	
P.acidilactici KABP™-021		*
L.plantarum KABP™-022		*
L.plantarum KABP™-023		*

* Daily Value not established

Other ingredients: Microcrystalline cellulose, vegetable capsule shell (hydroxypropyl methylcellulose), magnesium stearate (vegetable source) and silicon dioxide.

Floradapt and KABP are trademarks of Kaneka Corporation.



BioDoph-7 Plus®



Product #: 1285 (60C) | Comprehensive Probiotic & Prebiotic Support

Probiotic supplements are classically known to contain viable, defined microorganisms in sufficient quantities which work to alter the microbiota and, thus, exert beneficial health effects.⁺ **BioDoph-7 Plus®** supplies a specific blend of 3 prebiotics and 7 probiotics extensively tested to ensure optimal colonization with bacterial strains recognized for their bioactivity. It contains 20 billion viable organisms per capsule, providing optimal probiotic coverage.

Recommendation: One (1) capsule one (1) to two (2) times each day as a dietary supplement or as otherwise directed by a healthcare professional.

Supplement Facts

Serving Size: 1 Capsule

	Amount Per Serving
Proprietary Blend	400 mg
Inulin (from Chicory root)*, Arabinogalactans (from Larch)*, Marshmallow (Althea officinalis) (extract) (root)*, Bifidobacterium bifidum BB-06*, Bifidobacterium lactis BL-04*, Bifidobacterium breve BB-03*, Lactobacillus paracasei LPC-37*, Lactobacillus plantarum LP-115*, Lactobacillus salivarius LS-33*, Streptococcus thermophilus ST-21*	

* Daily Value not established

Other ingredients: Vegetarian capsule shell (modified cellulose) and magnesium stearate (vegetable source).

Each capsule of **BioDoph-7 Plus®** contains more than 20 billion organisms at time of manufacture.

Contains an ultra-trace amount (0.3 ppm) of milk constituents which are used in the fermentation of probiotic ingredients.

⁺These statements have not been evaluated by the Food and Drug Administration. These products are not intended to diagnose, treat, cure, or prevent any disease.



BioDophilus-FOS™



Product #: 1205 (4 oz) | B-Complex/Glandular Support

BioDophilus-FOS™ is a pleasant tasting powder that supplies the probiotics *Lactobacillus acidophilus* (DDS-1 strain), and *Bifidobacterium bifidum* in a prebiotic base of fructooligosaccharides. Each 1/2 teaspoon supplies 3 billion organisms, along with 1,200 mg of beet-sourced fructooligosaccharides.

Recommendation: One-half (1/2) teaspoon of **BioDophilus-FOS™** mixed with six (6) to eight (8) ounces of water, or beverage of your choice, each day as a dietary supplement or as otherwise directed by a healthcare professional.

Supplement Facts

Serving Size: 1.5 g (approx. 1/2 teaspoon)
Servings Per Container: 75

	Amount Per Serving	% Daily Value
Calories	5	
Total Carbohydrate	1 g	0% [†]
Sugars	0 g	*
<i>Lactobacillus acidophilus</i> (LA-14) and <i>Bifidobacterium bifidum</i> organisms	3 billion	*
Fructooligosaccharides (beet source)	1,200 mg	*

[†] Percent Daily Values based on a 2,000 calorie diet.

* Daily Value not established

Ingredients: Fructooligosaccharides (beet source), *Lactobacillus acidophilus* (LA-14) and *Bifidobacterium bifidum*.

Contains an ultra-trace amount (<0.03 ppm) of milk constituents which are used in the fermentation of probiotic ingredients.

REPAIR

Specific gluten free nutritional supplements, including vitamins, minerals, amino acids, and EFAs, are essential to gut repair and helping with the damaged intestinal lining.



Biomega-1000™



Product #: 1417 (90 Softgel Capsules) | Superior Quality Omega-3s

Biomega-1000™ provides a potent dose of omega-3 essential fatty acids (EFAs), sourced from a strategically-placed facility in the far South Pacific Ocean off the coast of Chile, guaranteeing the freshest raw material available, full traceability of the product, and unparalleled purity. Each capsule delivers an impressive 1,000 mg of EPA and DHA, making it an ideal choice when higher doses are desired.

Recommendation: One (1) softgel capsule with each meal as a dietary supplement or as otherwise directed by a healthcare professional.

Supplement Facts

Serving Size: 1 Softgel Capsule

	Amount Per Serving	% Daily Value
Calories	15	
Calories from Fat	15	
Total Fat	1.5 g	2% [†]
Saturated Fat	<1 g	<3% [†]
Omega-3 Fatty Acids	1.14 g	*

[†] Percent Daily Values based on a 2,000 calorie diet.

* Daily Value not established

Ingredients: Capsule shell (gelatin, glycerin and water), vitamin E (as mixed tocopherols).

Contains ingredients derived from anchovy.

Each softgel capsule of **Biomega-1000™** contains a total of 1,000 mg EPA and DHA, providing a natural source of the following Omega-3 fatty acids:

EPA (Eicosapentaenoic acid) 570 mg
DHA (Docosahexaenoic acid)..... 430 mg



Butyric-Cal-Mag™



Product #: 7810 (60C) | Intestinal Support

Butyric-Cal-Mag™ supplies a supplemental source of butyric acid (as calcium & magnesium citrate), the primary fuel of colonic cells. Butyric acid is a naturally-occurring 4-carbon fatty acid formed in the healthy colon from the fermentation of dietary fiber by friendly bacteria.

Recommendation: Two (2) capsules each day as a dietary supplement or as otherwise directed by a healthcare professional.

Supplement Facts

Serving Size: 2 Capsules
Servings Per Container: 30

	Amount Per Serving	% Daily Value
Vitamin A (as natural mixed carotenoids and acetate)	975 mcg RAE	108%
Pantothenic Acid (as calcium pantothenate)	16.7 mg	334%
Calcium (as calcium citrate)	40 mg	3%
Magnesium (as magnesium citrate)	40 mg	10%
ButyraGen™ Tributyrin Complex	1,000 mg	*

* Daily Value not established

Other ingredients: Capsule shell (gelatin and water), gum arabic, guar fiber, rosemary extract, silica and cellulose.

ButyraGen™ is a trademark of NutriScience Innovations LLC.



GI-Resolve®



Product #: 6417 (6.7 oz) | GI Function Support

GI-Resolve® combines effective clinical levels of well-researched nutrients and botanicals specifically formulated to support optimal gastrointestinal health and function⁺ without any added flavors, colors, sweeteners, gums or common allergens. Carefully sourced for premium quality, the ingredients in this clean and great-tasting powder promote optimal function of the GI lining, rejuvenate the health of intestinal mucosa, support a healthy inflammatory response, and build immune support.⁺

Recommendation: Two (2) teaspoons each day as a dietary supplement or as otherwise directed by a healthcare professional.

Caution: Not recommended for pregnant or lactating women.

Supplement Facts

Serving Size: 6.3 g (approx. 2 teaspoons)
Servings Per Container: 30

	Amount Per Serving	% Daily Value
Zinc (from 50mg of PepZinGI™ zinc carnosine) [†]	11 mg	100%
L-Glutamine	4 g	*
N-Acetyl D-Glucosamine	1 g	*
MSM (methylsulfonylmethane)	500 mg	*
Licorice (Glycyrrhiza glabra) (root) (extract) (deglycyrrhized)	400 mg	*
Okra (Abelmoschus esculentus) (fruit)	300 mg	*
Aloe Vera (Aloe barbadensis) (aerial part) (200:1 extract)	50 mg	*

* Daily Value not established

[†] PepZinGI® is a registered trademark of Hamari Chemicals USA, Inc.

Shellfish free.



Gastrazyme™



Product #: 1140 (90T) | Gastrointestinal Support with Vitamin U Complex

Gastrazyme™ supplies specific nutrients including vitamin U complex, chlorophyllins and vitamin A, ingredients all known to support the health of GI tract, which may become stressed due to normal, everyday factors.⁺ Early studies have recognized the effectiveness of raw cabbage juice in normalizing gastric and intestinal function.⁺ Glutamine and methionine derivatives present in this juice are believed to be the active principles. Specific attention has focused on methionine S-methylsulfonium (MMS) in the chlorinated form. MMS occurs in a variety of fruits and vegetables, such as cabbage. Studies have demonstrated that MMS supports the normal healing process of the stomach following exposure to nonsteroidal anti-inflammatory agents (NSAIDs).⁺ Traditionally, this compound has been designated "Vitamin U," although it does not meet the classic definition of a vitamin.

Recommendation: One (1) tablet three (3) times each day as a dietary supplement or as otherwise directed by a healthcare professional.

Supplement Facts

Serving Size: 1 Tablet

	Amount Per Serving	% Daily Value
Vitamin A (as natural mixed carotenoids and acetate) (ratio 2.5:1)	865 mcg RAE	96%
Gamma Oryzanol (from rice)	100 mg	*
Chlorophyllins (from Mulberry leaf)	20 mg	*
Vitamin U Complex (DL-methylmethionine sulfonium chloride)	10 mg	*
Superoxide Dismutase (from vegetable culture [†])	15 mcg	*
Catalase (from vegetable culture [†])	15 mcg	*

* Daily Value not established

Other ingredients: Cellulose, modified cellulose, stearic acid, silica and modified cellulose gum.

[†] Specially grown, biologically active vegetable culture (from organic peas, lentils, and/or chickpeas) containing naturally associated phytochemicals including polyphenolic compounds with SOD and catalase, dehydrated at low temperature to preserve associated enzyme factors.



HCl-Ease®



Product #: 1235 (120C) | HCl/Digestive Support

HCl-Ease® contains a patented proprietary blend of botanicals and enzymes demonstrated to support esophageal health. This highly effective and targeted nutritional support was designed and clinically evaluated by Dr. Gary Lasneski. Along with pepsin, **HCl-Ease®** includes a blend of meadowsweet, okra, eyebright, marshmallow and Asian plantain.

Recommendation: Two (2) capsules two (2) times each day as a dietary supplement or as directed by a healthcare professional.

Caution: Do not take this product if you are pregnant or lactating.

Warning: Not recommended for those with salicylate intolerance.

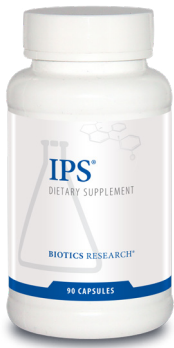
Supplement Facts

Serving size: 2 Capsules
Servings per container: 60

	Amount Per Serving
Proprietary blend	820 mg
Meadowsweet (<i>Filipendula ulmaria</i>)(herb)(extract)*, Okra (<i>Abelmoschus esculentus</i>)(fruit)*, Eyebright (<i>Euphrasia officinalis</i>)(herb)(extract)*, Marshmallow (<i>Althaea officinalis</i>)(root)(extract)*, Asian Plantain (<i>Plantago asiatica</i>)(seed)(extract)*, Pepsin*	

* Daily Value not established

Other ingredients: Capsule shell (gelatin and water) and cellulose.



IPS®

Product #: 6415 (90C) | Gastrointestinal Support



IPS® is a comprehensive Intestinal Permeability Support supplement, consisting of a proprietary blend of botanical compounds and amino acids, along with other synergistic constituents. It supplies a comprehensive array of nutritional factors to support healthy intestinal function, specifically as it relates to permeability and intestinal mucosa integrity.† IPS® features L-glutamine, which is the preferred fuel for intestinal tissues, promoting natural intestinal healing.†

Recommendation: One (1) capsule three (3) times each day as a dietary supplement or as otherwise directed by a healthcare professional.

Supplement Facts

Serving Size: 1 Capsule

	Amount Per Serving
Proprietary Blend	600 mg
Jerusalem Artichoke (Helianthus tuberosus) (tuber)*	
L-Glutamine*	
Spanish Moss (Tillandsia usneoides) (whole)*	
Lamb Intestine Concentrate*	
Glucosamine Sulfate (from shrimp & crab shell)*	
Gamma Oryzanol (from rice)*	
L-Glutathione (reduced)*	
Cellulase*	

*** Daily Value not established**

Ingredients: Capsule shell (gelatin and water) and magnesium stearate (vegetable source).

Contains ingredients derived from shrimp and crab shell.

Substance with hair-like appearance is actually Spanish moss fibers.



L-Glutamine Powder

Product #: 5209 (17.9 oz) | Free-Form Amino Acid



L-Glutamine Powder supplies 3g of L-glutamine per teaspoon, as a nonhydrolyzed, free-form L-amino acid. L-Glutamine is the most abundant amino acid in the body. Although the body manufactures glutamine, during times of extreme stress (such as after very heavy exercise or an injury), in certain circumstances the body may need more glutamine than it can naturally produce. Glutamine assists in immune system functions, and appears to be needed for normal brain function and digestion.† It helps to protect the gastrointestinal mucosa, and is a major fuel for enterocytes.† It also supports tissues in the body that rapidly turn over, such as intestinal cells (intestinal epithelium).† High levels of cortisol during times of stress can lower the body's stores of glutamine.†

Recommendation: One (1) teaspoon (approx. 3 g) each day as a dietary supplement or as otherwise directed by a healthcare professional.

Supplement Facts

Serving Size: 3 g (approx. 1 teaspoon)

Servings Per Container: 166

	Amount Per Serving	% Daily Value
Glutamine (as L-Glutamine)†	3 g	*

*** Daily Value not established**

Other ingredients: L-Glutamine.

† Non-hydrolyzed, naturally produced, free-form L-Amino Acid

CERTIFIED PURE

Contains no additives of any kind

†These statements have not been evaluated by the Food and Drug Administration. These products are not intended to diagnose, treat, cure, or prevent any disease.

For more information, call (800) 231-5777 or visit www.bioticsresearch.com